

# Guidelines for Participation

*Join the National  
Conversation  
on Child Abuse  
and Neglect*

- Participant phones are on mute, but we encourage you to use the chat box to send us questions throughout the presentation.
- There are polling questions and a structured chat in this call—we are asking all participants to respond.
- This is a fast format (30-minute dialogue), but there will be additional opportunities to interact on the issue.
- At the end of the formal presentation there will be time for an extended Q & A with the speakers. Join us to hear answers to burning questions.



DIGITAL DIALOGUE

TRAUMA & RECOVERY



# *Understanding and Responding Proactively to Polyvictimization*



# Speakers

*Join the National  
Conversation  
on Child Abuse  
and Neglect*



PRESENTER  
**Natalia Aguirre,**  
National Director of the Family  
Justice Center Alliance  
Alliance for HOPE International



MODERATOR  
**Nilofer Ahsan**  
Lead, Knowledge & Partnerships  
CANTASD



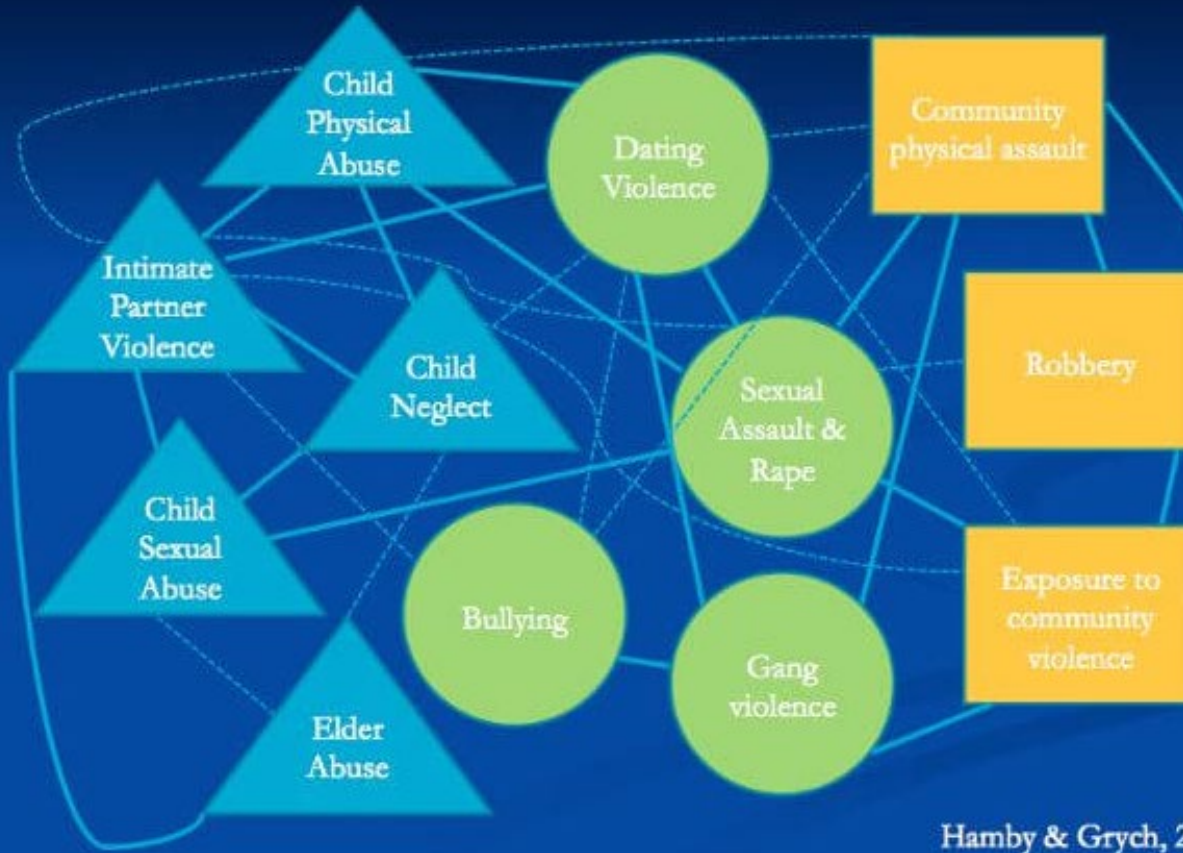
PRESENTER  
**Stacy Phillips,**  
Program Manager  
Office for Victims of Crime

[cantasd.acf.hhs.gov](http://cantasd.acf.hhs.gov)



# Polyvictimization:

## The Web of Violence



Describes the **collective** experiences of multiple types of violence, usually in multiple settings, and often at the hands of multiple perpetrators

# Let's look at Sally

She is a 16 year old girl  
who in the span of 12 months...

*Join the National  
Conversation  
on Child Abuse  
and Neglect*

**Was sexually molested  
by her mom's  
boyfriend**

**Watched a gang fight on her  
walk home from school**

**Has a boyfriend who has  
been verbally and  
emotionally abusive**

**Had her cell phone  
stolen**



**Has witnessed violence  
between her mom and her  
mom's boyfriend**

**Has been bullied at  
school**

*The three types of ACEs include*

**ABUSE**

**NEGLECT**

**HOUSEHOLD DYSFUNCTION**



Physical



Physical



Mental Illness



Incarcerated Relative



Emotional



Emotional



Mother treated violently



Substance Abuse



Sexual



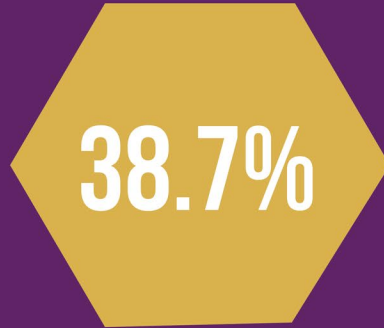
Divorce

*Join the National Conversation on Child Abuse and Neglect*

# THE NATIONAL SURVEY OF CHILDREN'S EXPOSURE TO VIOLENCE

First comprehensive national survey to look at the entire spectrum of children's exposure to violence, crime, and abuse across all ages, settings, and timeframes.

Examined past year and lifetime exposure to physical and emotional violence through both direct and indirect exposures



REPORTED MORE THAN  
**1** TYPE OF  
VICTIMIZATION

OF THOSE CHILDREN



REPORTED MORE THAN  
**1** TYPE OF DIRECT  
VICTIMIZATION



REPORTED OR MORE  
**10** DIRECT VICTIMIZATIONS



REPORTED OR MORE  
**5** DIRECT EXPOSURES TO  
DIFFERENT TYPES OF  
VIOLENCE

# POLYVICTIMIZATION

Deteriorates  
Mental Health

Changes  
Behavior

Decreases  
Physical Well-being

Increases Future  
Victimization

2-7 TIMES MORE  
LIKELY TO BE  
VICTIMIZED IN THE  
FUTURE

Increases Life  
Adversities

4-6 TIMES THE  
LEVEL OF SERIOUS  
VICTIMIZATION

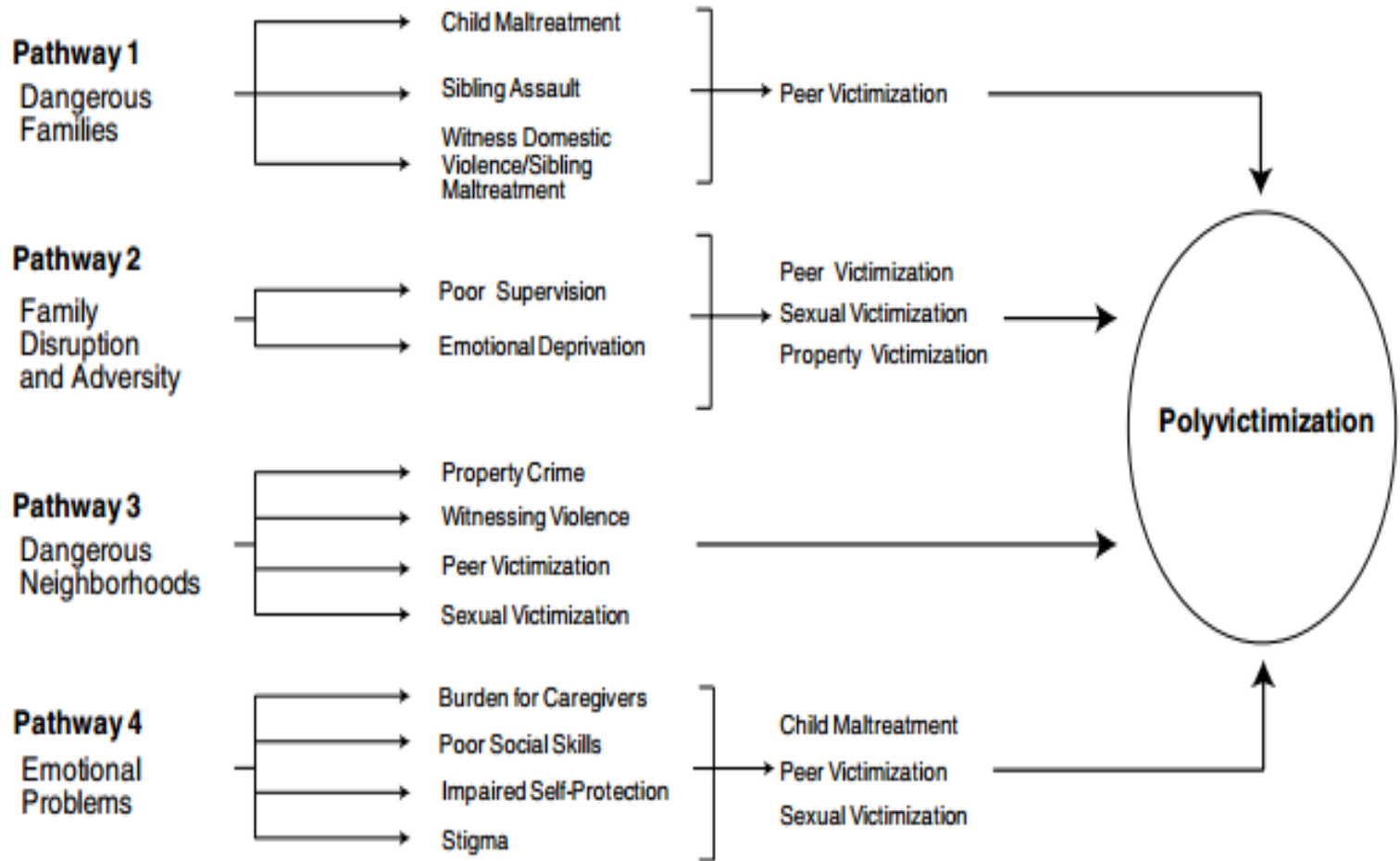




# Pathways to Polyvictimization

Join the National Conversation on Child Abuse and Neglect

**Figure 6: Conceptual Models of Pathways to Polyvictimization**



*Join the National  
Conversation  
on Child Abuse  
and Neglect*

Victimizations are not randomly distributed but tend to **cumulate** for certain individuals and in certain environments

[cantasd.acf.hhs.gov](http://cantasd.acf.hhs.gov)



Start Small

Dream Big

## FAMILY JUSTICE CENTERS AND MULTI-AGENCY MODELS

Advocacy

Law  
Enforcement

Prosecutor  
and  
Civil Legal  
Services

Counseling  
Child  
Resource  
Room  
Adult  
Therapy

MDT  
Child Abuse  
and  
Sexual  
Assault

Social  
Services  
DCF  
Housing  
Services  
Cultural and  
Linguistic

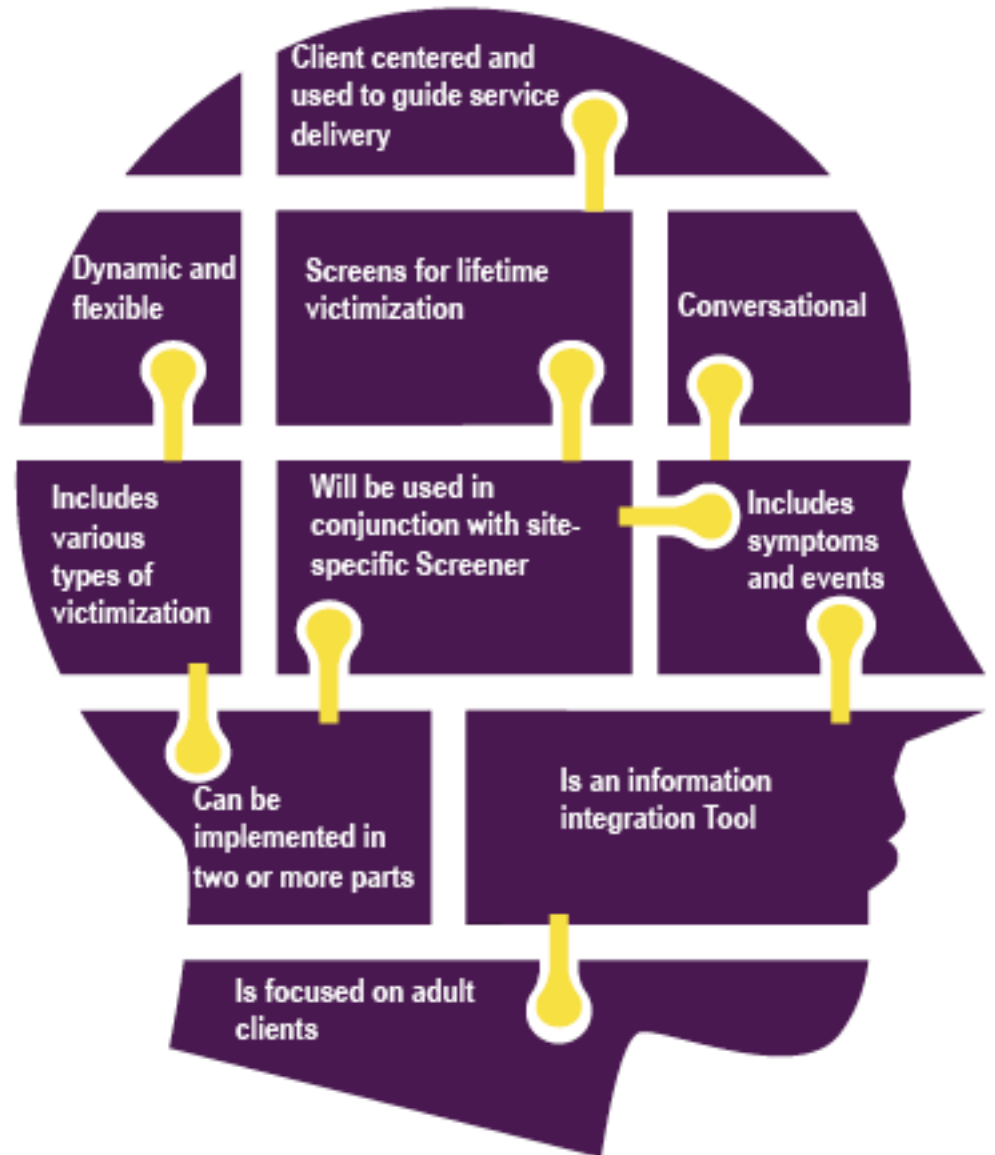
Wellness  
Center  
Mental  
Health Center  
Interfaith  
Counseling  
Meditation

Medical  
Forensic  
Medical  
Examination  
Room  
Prevention

Self  
Sufficiency  
Job Training  
Dress for  
Success  
Childcare  
Camping and  
Mentoring

Adapted from:  
The Center for Women and Families of Eastern Fairfield County, Inc.

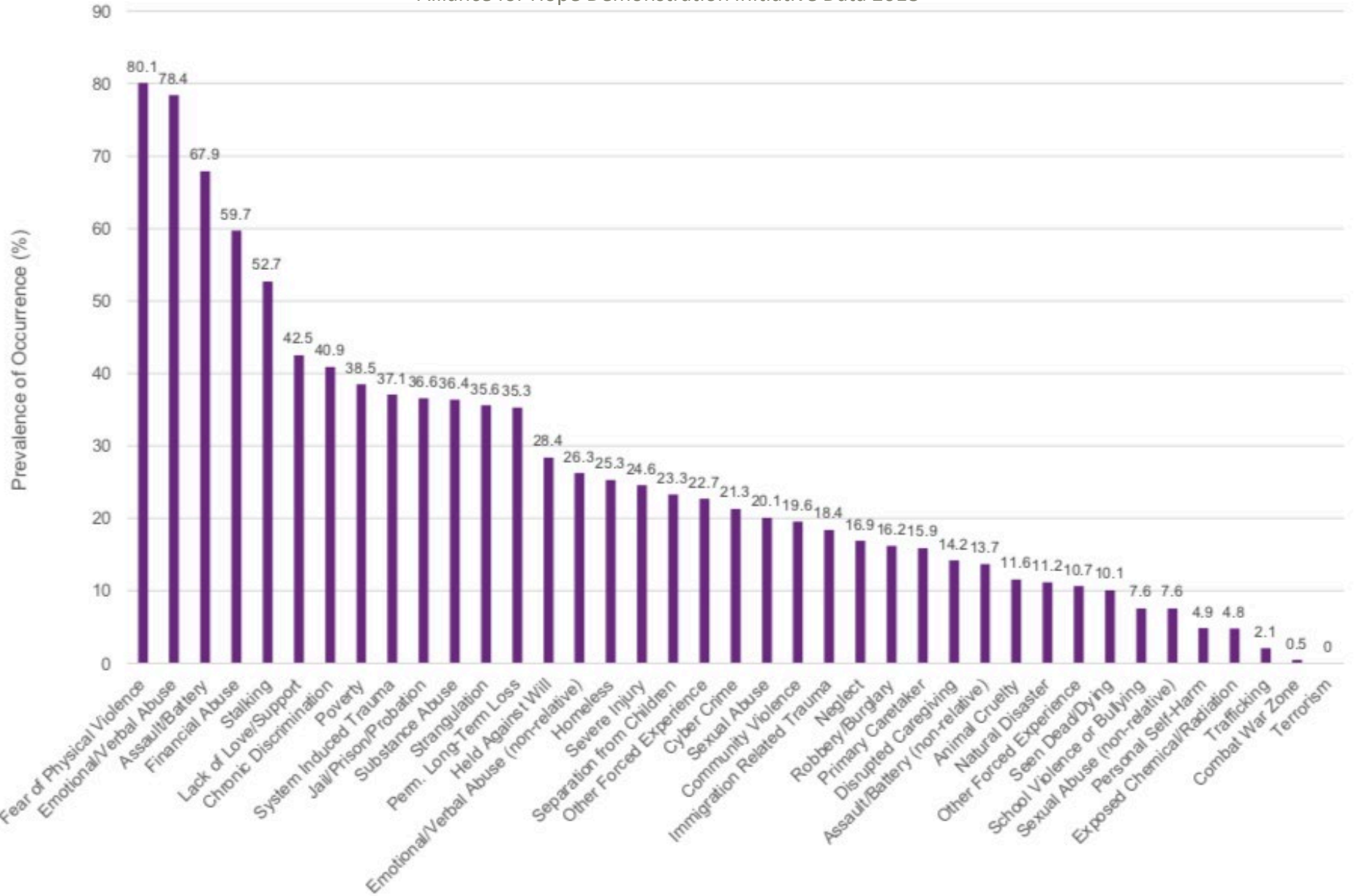
# Our Agreements About the Tool



# Pilot Polyvictimization Assessment

## Prevalence of Event Occurrence in Last Year:

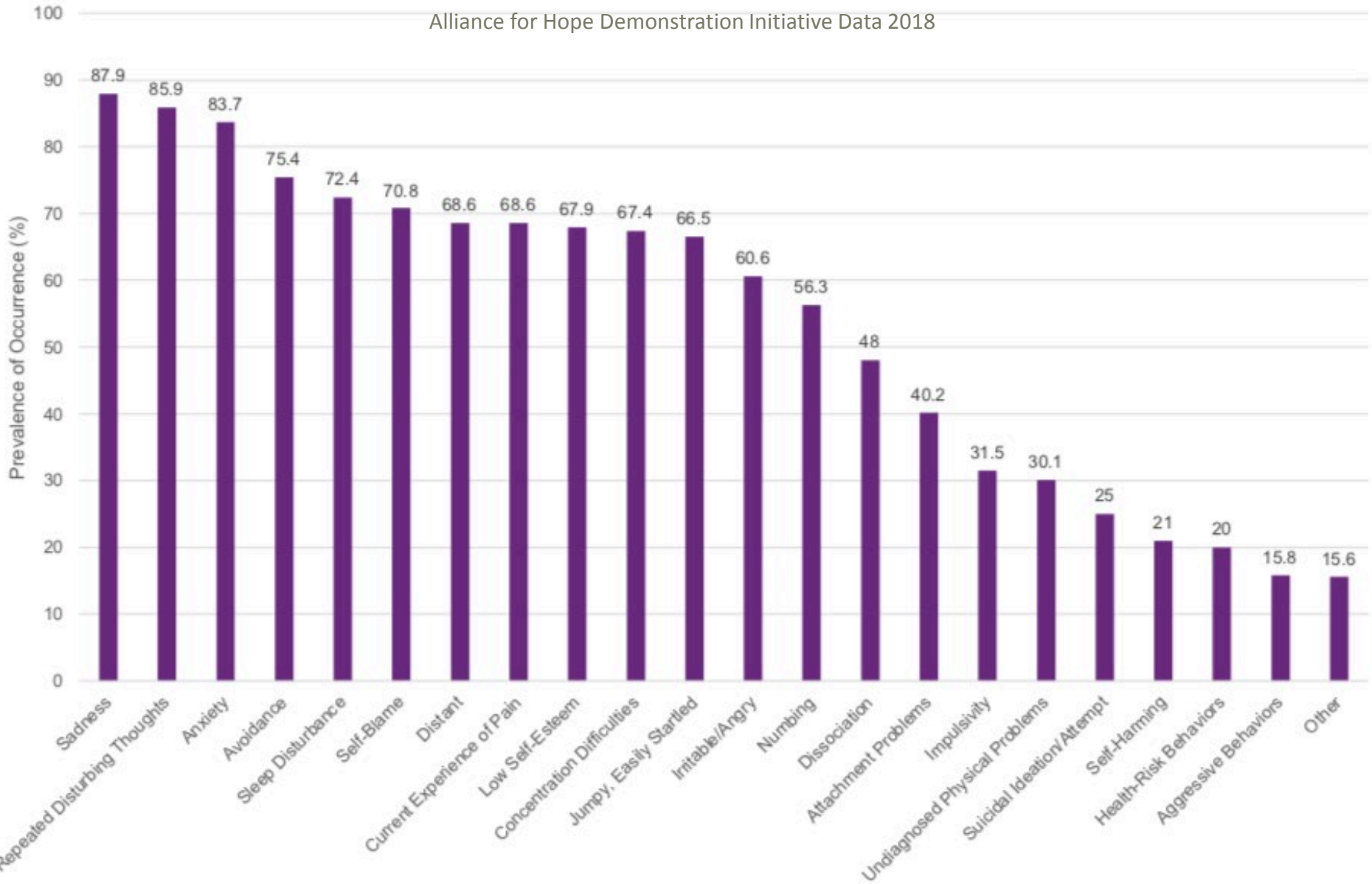
Alliance for Hope Demonstration Initiative Data 2018



# Pilot Polyvictimization Assessment

## Prevalence of Occurrence of Trauma Symptoms In The Last Year

Alliance for Hope Demonstration Initiative Data 2018



Join the National  
Conversation  
on Child Abuse  
and Neglect

## Pilot Polyvictimization Assessment Principal Components Analysis of 21 Item Polyvictimization In The Last Year (20% Criteria): Item Grouping by Component

I K1 = 4.53	II K1 = 2.00	III K1 = 1.46	IV K1 = 1.35	V K1 = 1.26	VI K1 = 1.19	VII K1 = 1.01
1. Fear of Physical Violence	1. Sexual Abuse	1. Homeless	1. System Induced Trauma	1. Lack of Love or Support	1. Cybercrime	1. Substance Abuse
2. Emotional Abuse	2. Held Against Will	2. Separation from Children	2. Chronic Discrimination	2. Emotional Abuse (non-relative)	2. Stalking	2. Perm. Long-Term Loss
3. Assault/Battery	3. Strangulation	3. Poverty				
4. Financial Abuse	4. Other Forced Experience					
	5. Severe Physical Injury					

KMO = .76

Bartlett's Test of Sphericity [ $\chi^2 = 637.55$  (210);  $p < .001$ ]

Extracted Factors: K1  $\geq 1.0$  account for 60.91% of variance.

Varimax Rotation with structure coefficients  $\geq .40$ : One dual loading Strangulation for components II (.57) and VI (.53).

Internal Consistency Reliability for 21 items = .80

# What we've learned

*Join the National  
Conversation  
on Child Abuse  
and Neglect*

- Use a holistic perspective and remember that healing is not always linear
- Listen deeply and let survivors tell their whole story to better support healing
- Ensure that staff have the support they need
- Don't just ask what happened—help the client identify things that they are doing well and increase hope!
- Create community for survivors by including alternative healing modalities such as yoga, acupuncture, Reiki, singing groups etc.

[cantasd.acf.hhs.gov](http://cantasd.acf.hhs.gov)





# Resources

*Join the National  
Conversation  
on Child Abuse  
and Neglect*

- [Tip Sheet for PolyVictimization](#)
- [Polyvictimization and Complex Trauma](#)
- Addressing Polyvictimization in Family Justice Centers and Multi-Agency Models (link from handout)
- Family Justice Centers: [www.familyjusticecenter.org](http://www.familyjusticecenter.org)
- [Background information on ACES](#)

# Thank You & Next Steps

*Join the National  
Conversation  
on Child Abuse  
and Neglect*

- Download the handouts to learn more. Click on the files in the “Handouts” box on your screen.
- Do you have innovative ideas, questions or concerns about trauma and resilience? Tell us about your work. Send an e-mail to **hello@CANTASD.org** with “Trauma and Resilience” in the subject line.

Upcoming:

*Jan. 10<sup>th</sup>. Father  
Engagement  
Addressing the  
Challenging Issues*

*February 26<sup>th</sup>, What  
the Science Tells us  
About Building  
Resilience*