

DIGITAL DIALOGUE

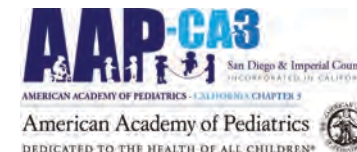


Partnering to Address Childhood ACES

Pediatric Practices Partner with Community to Address the Impact of Adverse Childhood Experiences



SAN DIEGO STATE UNIVERSITY
Social Policy Institute
School of Social Work



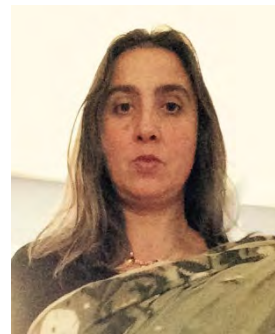
Introducing Our Presenters



Lori Clarke
Co-Principal
Investigator for the
Social Policy Institute
at San Diego State
University



**Pradeep Gidwani, MD,
MPH, FAAP**
Medical Director at the
American Academy of
Pediatrics, California
Chapter 3, San Diego
and Imperial Counties



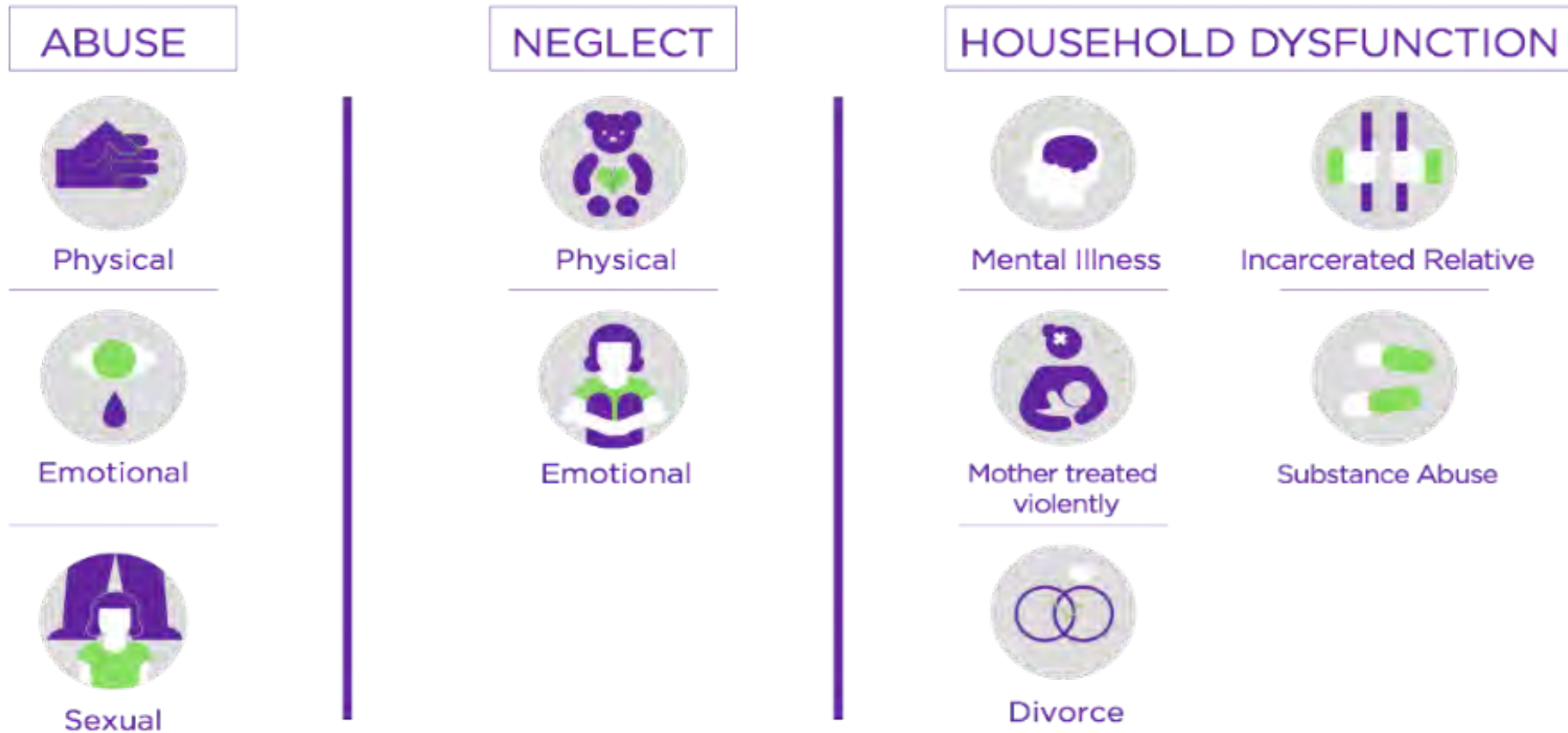
Nilofer Ahsan
Lead, Knowledge and
Partnerships
Children's Bureau
Learning and
Coordination Center
Moderator

ACEs Aware

- California Surgeon General Dr. Nadine Burke Harris, in partnership with Gov. Newsom, the state Department of Health Care Services (DHCS), and health and community leaders, is leading system reform that recognizes, and responds to, the effects that ACEs have on our biological systems and addresses the lifelong impacts of ACEs.
- The statewide ACEs Aware Initiative offers:
 - Training, screening tools, protocols, and payment for screening children and adults.
 - Provider Engagement and Communications Activities.

The California Surgeon General has set a bold goal to cut ACEs in half in one generation.

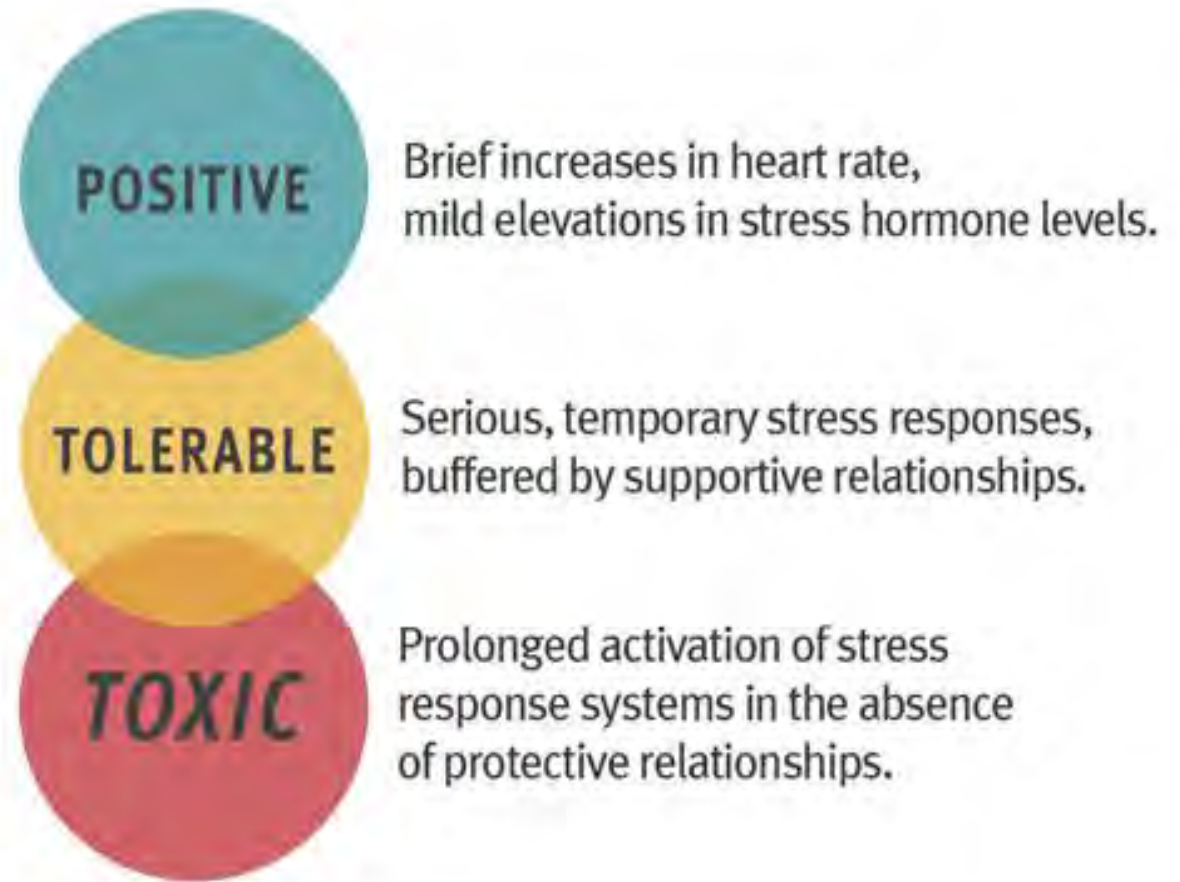
10 Categories of Adverse Childhood Experiences



Copyright 2013. Robert Wood Johnson Foundation. Used with permission from the Robert Wood Johnson Foundation.

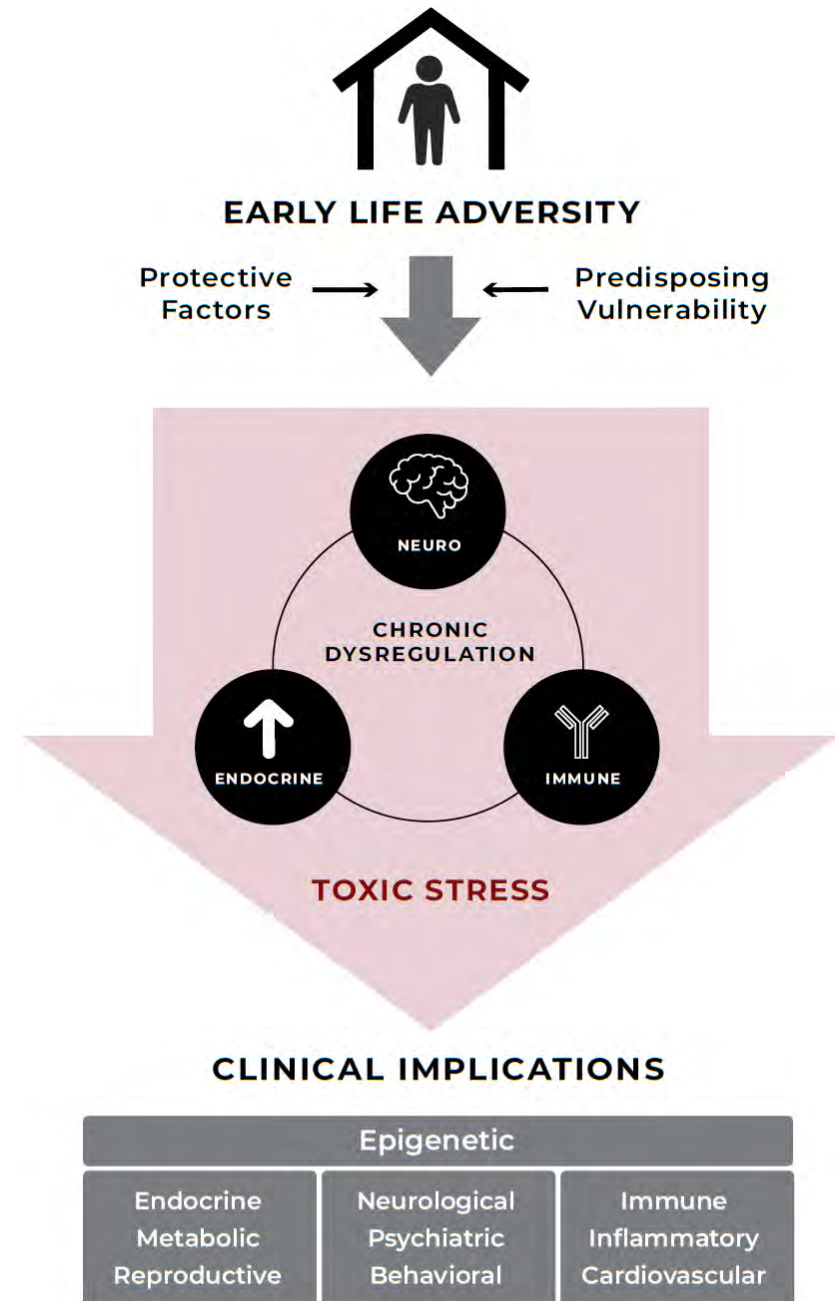
Positive, Tolerable, or Toxic Stress

Source: Center on the Developing Child at Harvard University.

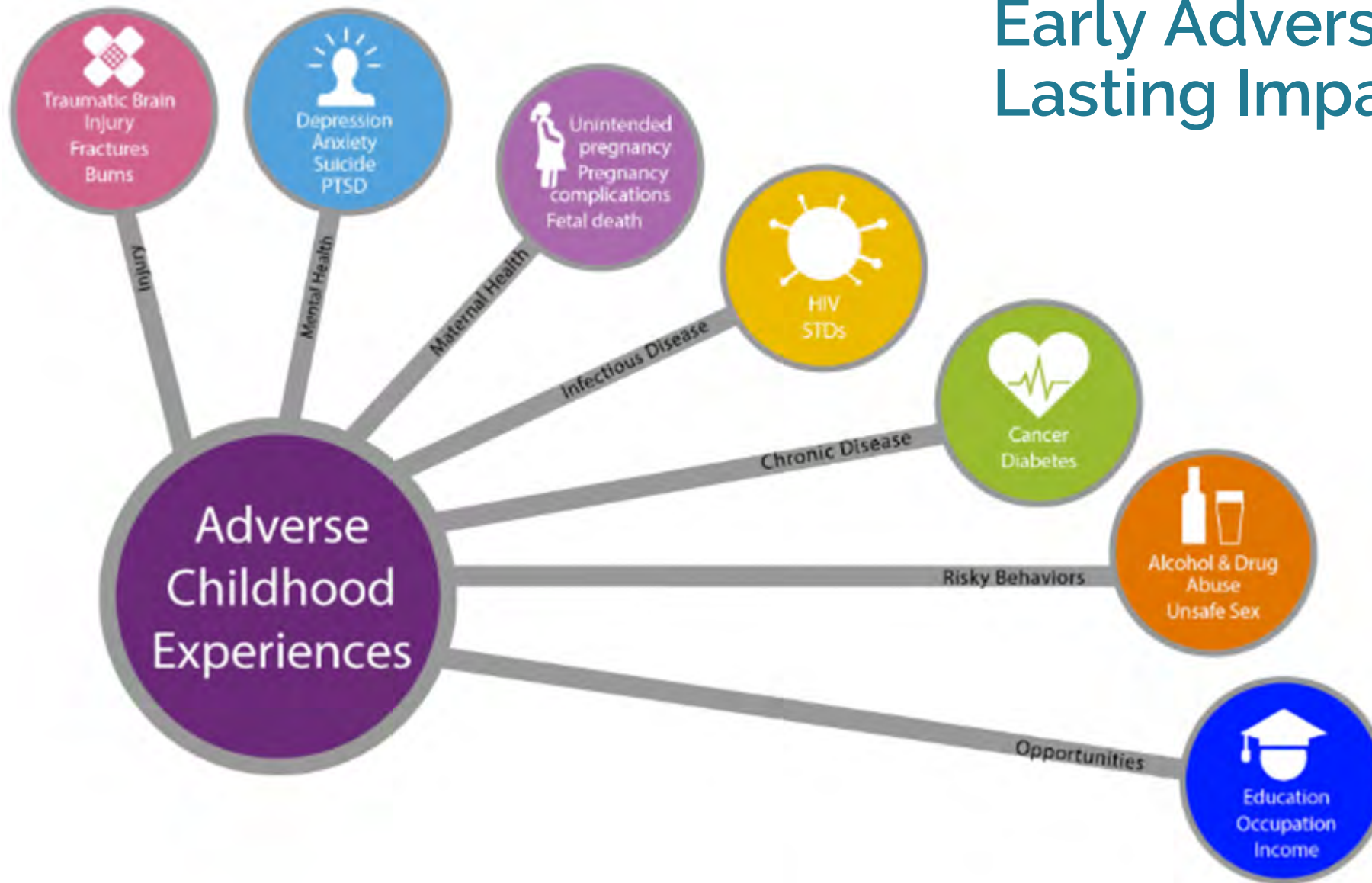


The Complex Biology of ACES

Source: Adapted from Bucci, M., Marques, S. S., Oh, D., & Harris, N. B. (2016). Toxic stress in children and adolescents. *Advances in Pediatrics*, 63(1), 403-428.



Early Adversity Has Lasting Impacts



ACEs Dramatically Increase Risk for At Least 9 of the 10 Leading Causes of Death in the U.S.

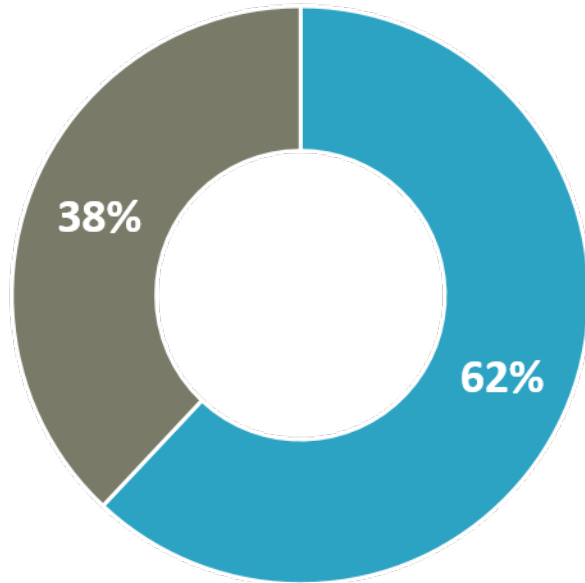
Leading Causes of Death in the U.S., 2017		Odds Ratios for ≥ 4 ACEs (relative to no ACEs)
1	Heart disease	2.1
2	Cancer	2.3
3	Accidents (unintentional injuries)	2.6
4	Chronic lower respiratory disease	3.1
5	Stroke	2.0
6	Alzheimer's or dementia	11.2
7	Diabetes	1.4
8	Influenza and pneumonia	Risk Unknown
9	Kidney disease	1.7
10	Suicide (attempts)	37.5

Source of causes of death: CDC, 2017; Sources of odds ratios: Hughes et al., 2017 for 1, 2, 4, 7, 10; Petrucelli et al., 2019 for 3 (injuries with fracture), 5; Center for Youth Wellness, 2014 for 6 (Alzheimer's or dementia); Center for Youth Wellness, 2014 and Merrick et al., 2019 for 9.

Prevalence of ACEs in California

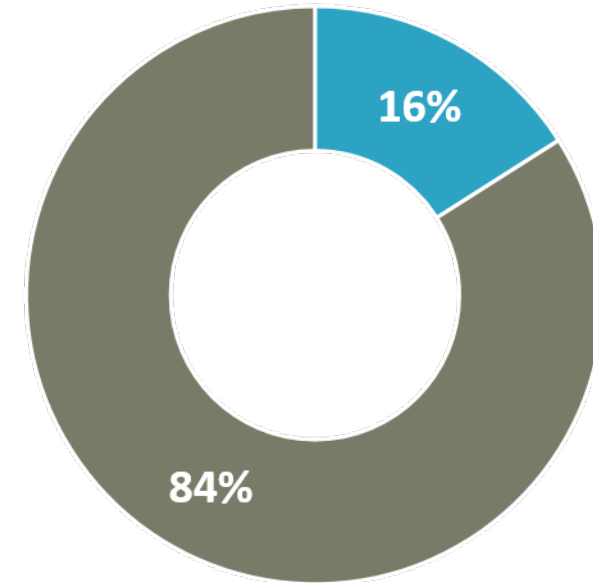
Californians who have experienced at least 1 ACE

■ Have experienced at least 1 ACE



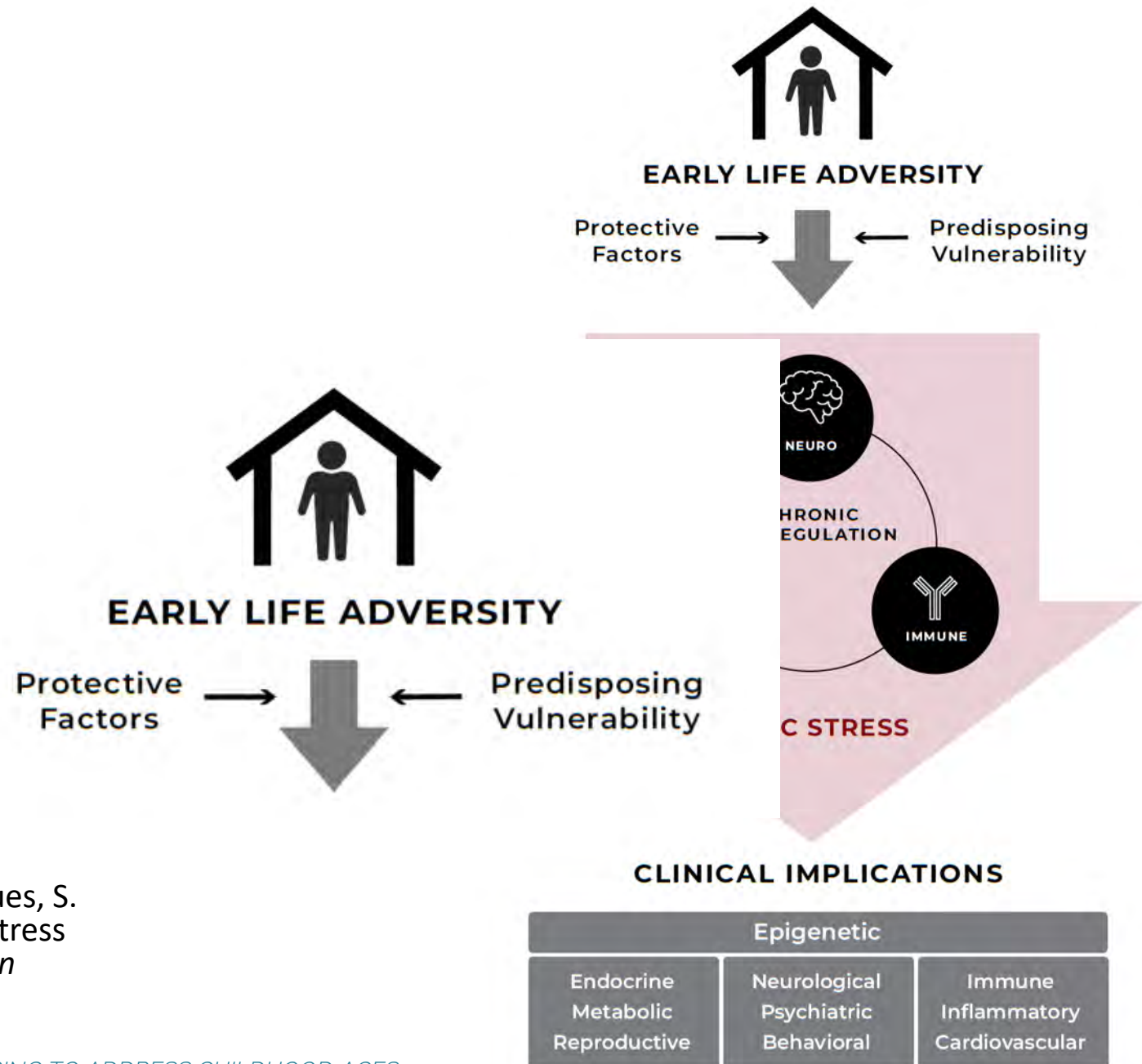
Californians who have experienced 4 or more ACEs

■ Have experienced 4 or more ACEs



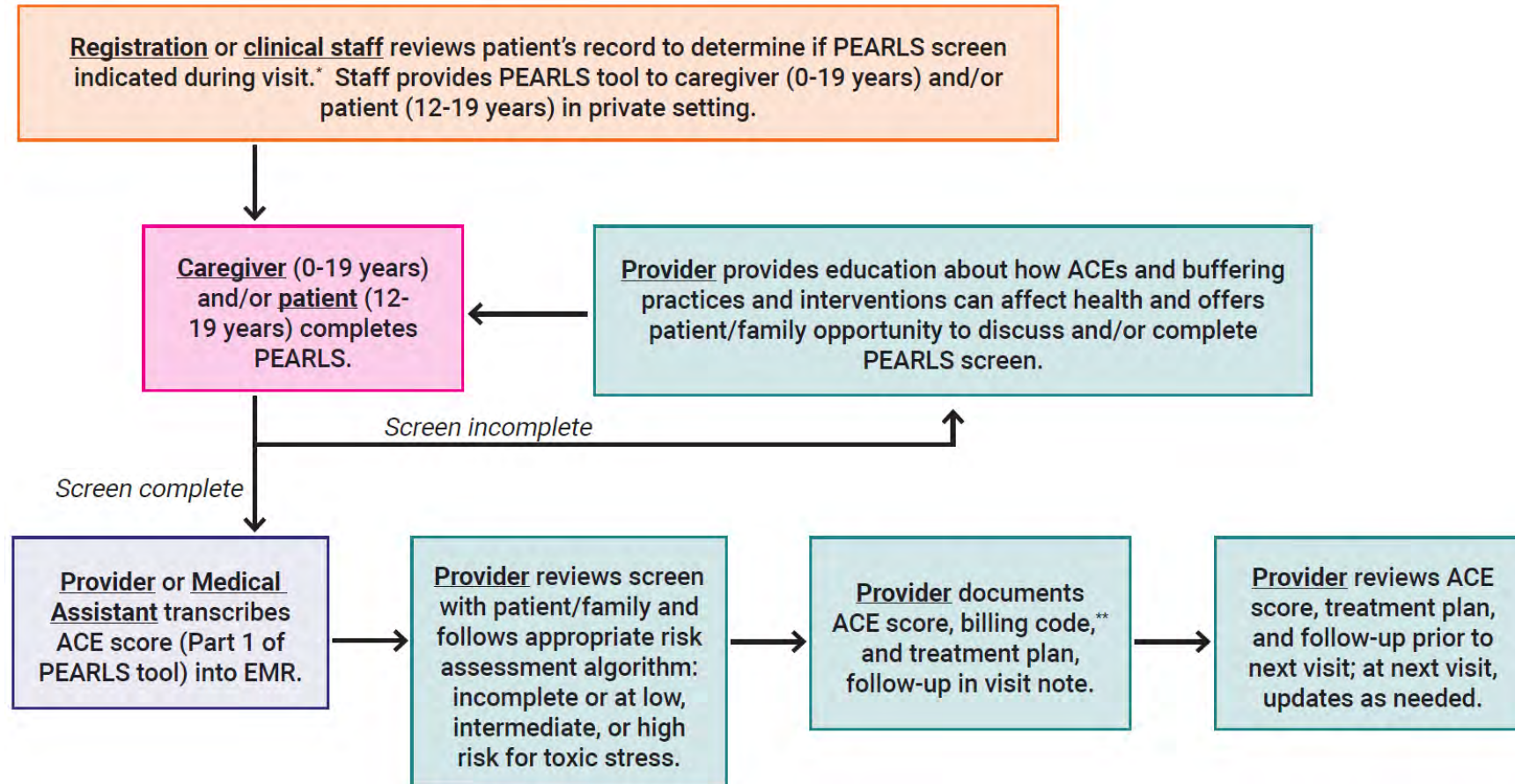
Sources: California Department of Public Health, Injury and Violence Prevention Branch (CDPH/IVPB), University of California, Davis, Violence Prevention Research Program, California Behavioral Risk Factor Surveillance System (BRFSS), 2011-2017.

The Complex Biology of ACES



Source: Adapted from Bucci, M., Marques, S. S., Oh, D., & Harris, N. B. (2016). Toxic stress in children and adolescents. *Advances in Pediatrics*, 63(1), 403-428.

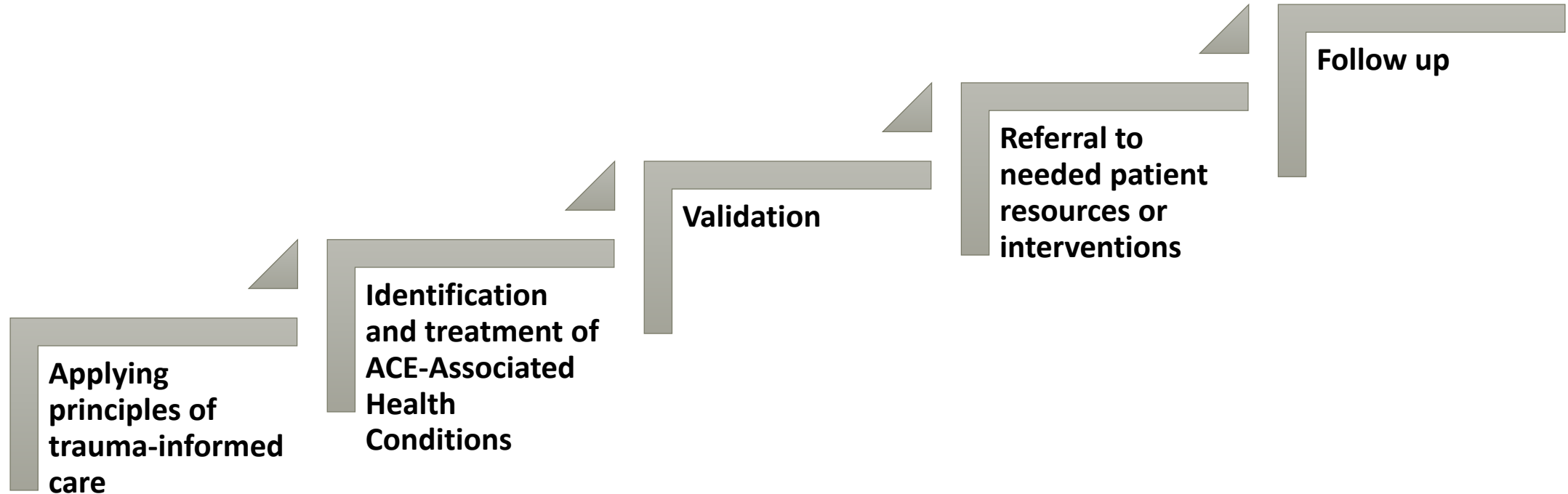
Pediatric ACE Screening Clinical Workflow



Available at: ACEsAware.org/clinical-assessment

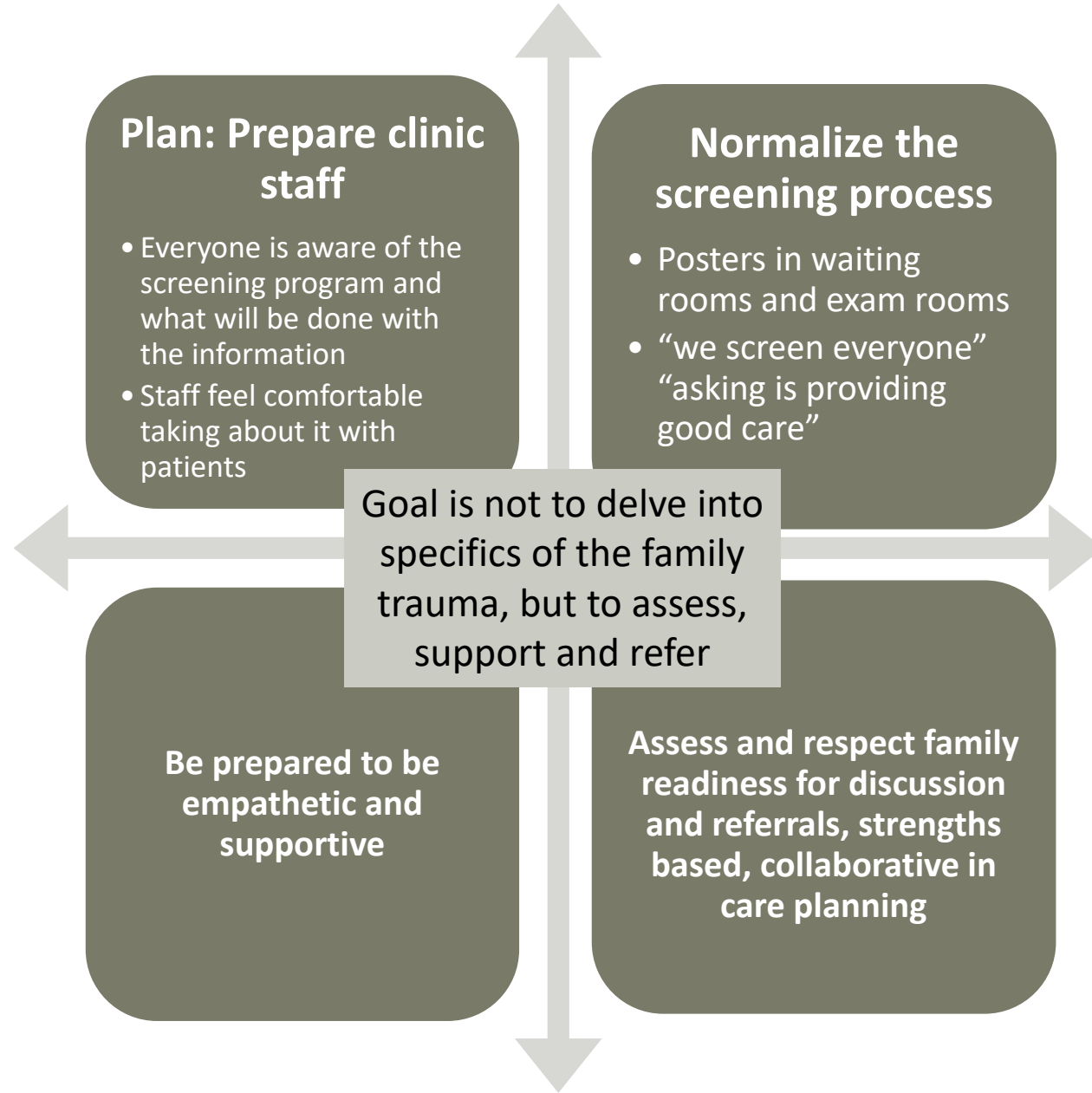
Clinical Response Overview

Clinical response to identification of ACEs and increased risk of toxic stress should include:



For information on the clinical response to ACEs and toxic stress, visit ACEsAware.org/assessment-and-treatment

Avoiding Re-traumatization



Self-Care

Source: acesaware.org, October 2020.



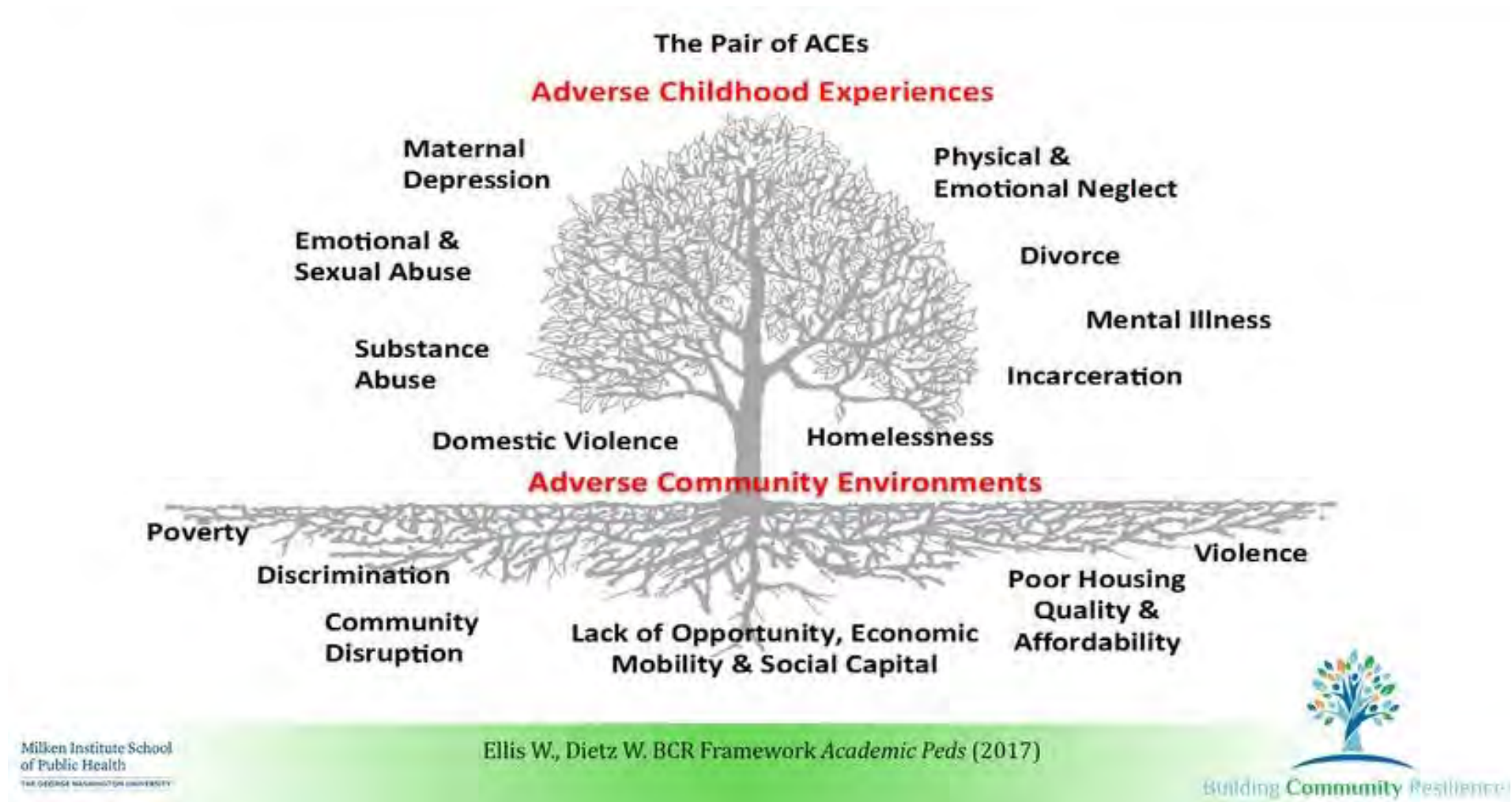
HOPE Framework

From - Healthy Outcomes from Positive Experiences -

<https://positiveexperience.org/>

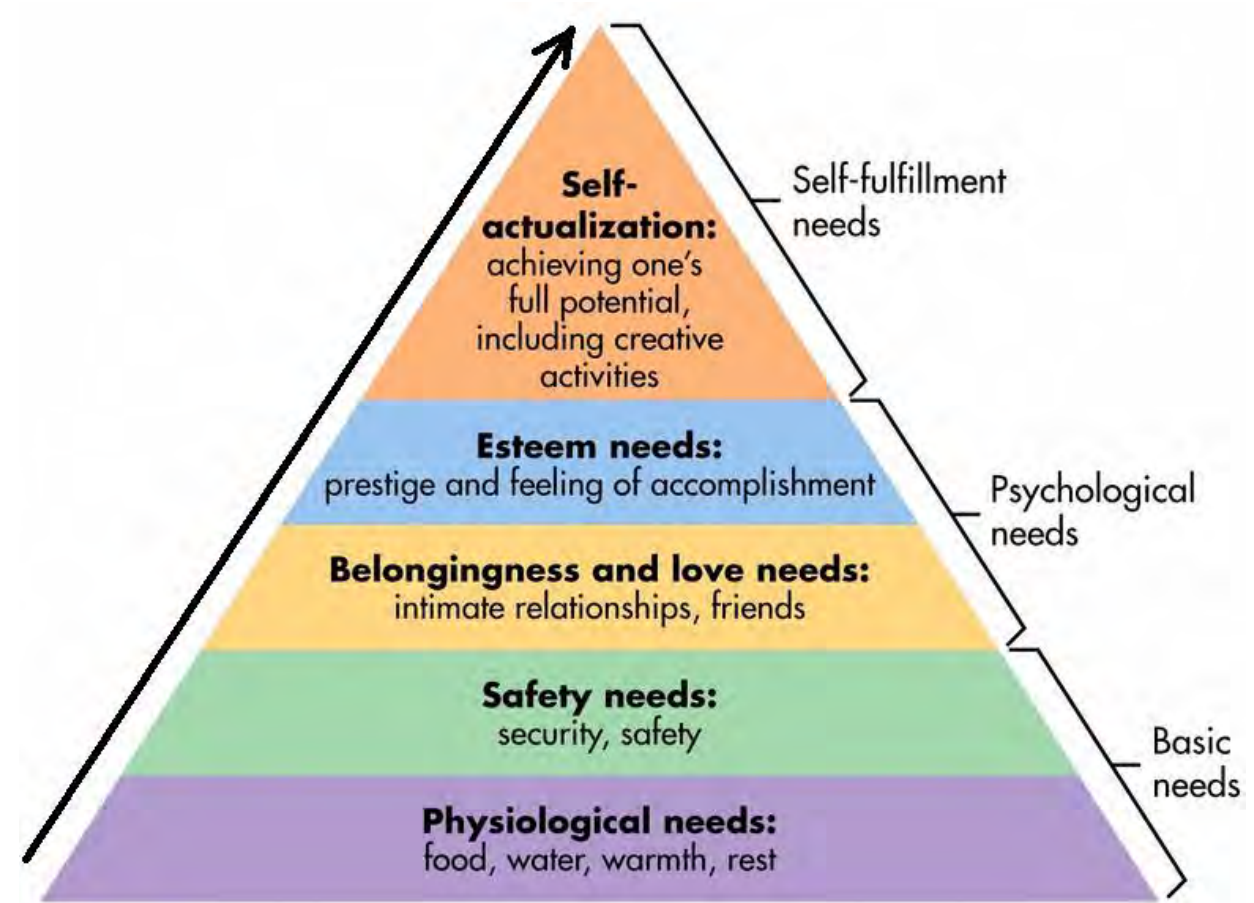
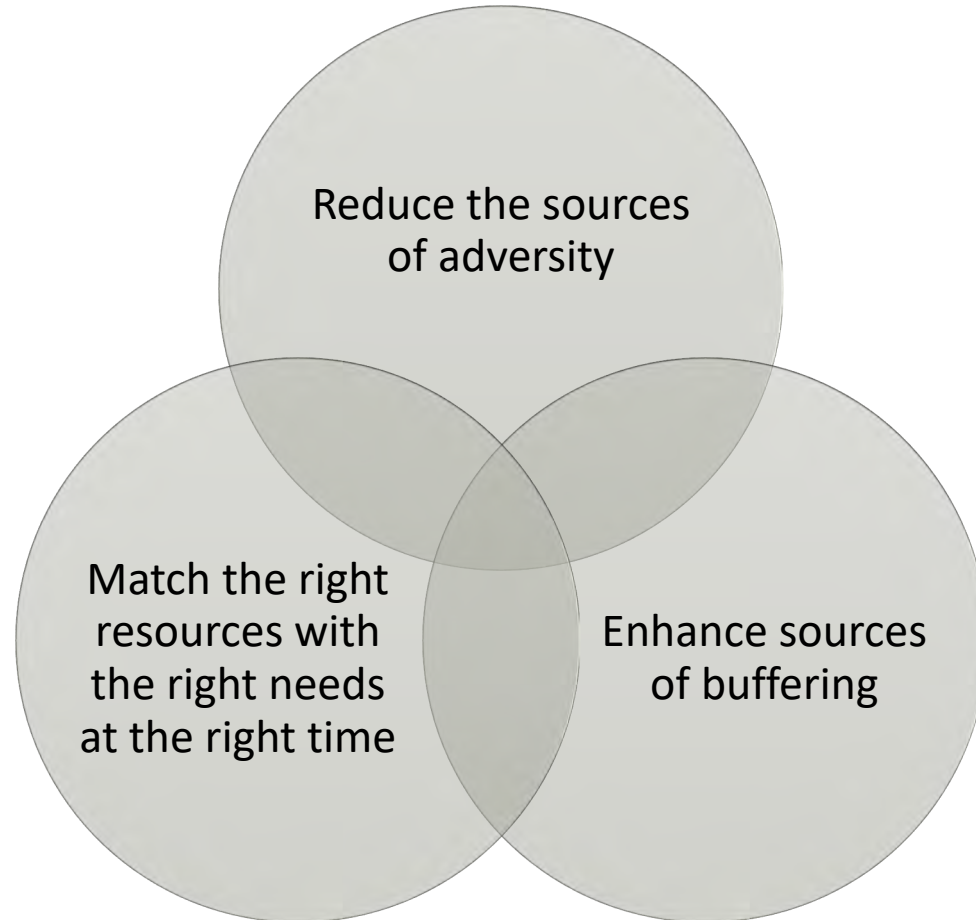


ACEs and Health Equity



Source: Center for Community Resilience, Milken Institute School of Public Health, George Washington University

Family Readiness and Referrals



Maslow's Hierarchy of Needs

www.simplypsychology.org/maslow.html

ACEs Network of Care

An ACEs **network of care** includes agencies, organizations, and individuals who respond to the needs of children, youth, families, and caregivers who have experienced ACEs.

A comprehensive ACEs network of care:

- Promotes healing
- Provides and coordinates prevention and intervention services to youth and families
- Builds capacity within communities to meet the needs of youth exposed to ACEs

Regional Networks of Care

- Pediatric providers meet community-based organizations and hear about their resources and approaches to providing supports for children and families.
- Pediatric providers understand how community organizations build protective factors and alleviate challenges created by ACEs.
- Community organizations understand the challenges and needs pediatric providers encounter in their work with families.
- Referral pathways are examined and defined to ensure connections for children and families who are screened for ACEs.

Resources

ACEs Aware

<https://www.acesaware.org/>

Adverse Childhood Experiences (ACEs), Child Welfare Information Gateway

<https://www.childwelfare.gov/topics/preventing/overview/framework/aces/>

This collection of resources provides an overview of ACEs and how healthy outcomes from positive experiences can be used to help mitigate the impact of ACEs on child development.

Balancing ACEs with HOPE, CBLCC

<https://cblcc.acf.hhs.gov/topic-areas/trauma-and-healing/balancing-aces-with-hope/>

Access the summary and recording of our Digital Dialogue with Robert Sege about the role of positive experiences in child development.

Adverse Childhood Experiences, CDC

<https://www.cdc.gov/violenceprevention/aces/index.html>

Browse CDC's library of resources about ACEs.

Topics: Resilience and Well-being, CBLCC

<https://cblcc.acf.hhs.gov/topic-areas/resilience-and-well-being/>

This collection of resources on the CBLCC website includes tip sheets, videos, and tools related to toxic stress, ACEs, and the science of resilience.



Discussion

Please type your
questions into the
chat box.

Thank You!

Lori Clarke

lsclarke@sdsu.edu

<https://sdsusocialpolicyinstitute.org/>

Pradeep Gidwani

pgidwani@aapca3.org

<https://aapca3.org/>



cblcc.acf.hhs.gov

